

# Development Plan Julian Alps Biosphere Reserve Sustainable Tourism Destination 2016 - 2020

Nature Education /Public Institution Triglav National Park  
Triglav National Park Visitor Monitoring 2016

Majda Odar, Triglav National Park Public Institution  
Roosta, september 2017



**TNP:**  
**83.982 ha**  
**= 4% of SLO**







## Radovna River – Vintgar Gorge





Triglavska roža  
*Potentilla nitida*

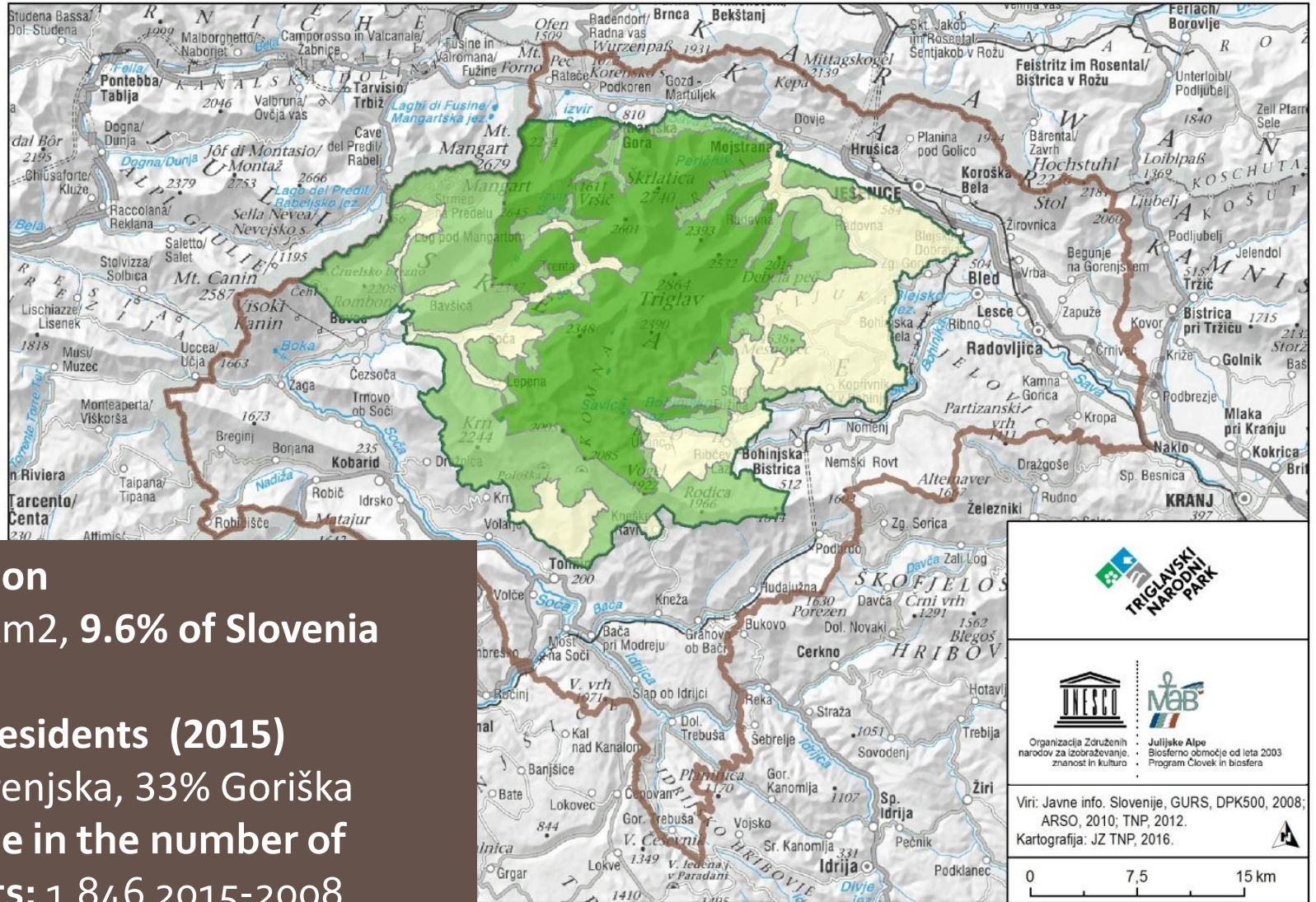








# Biosphere Reserve Julian Alps

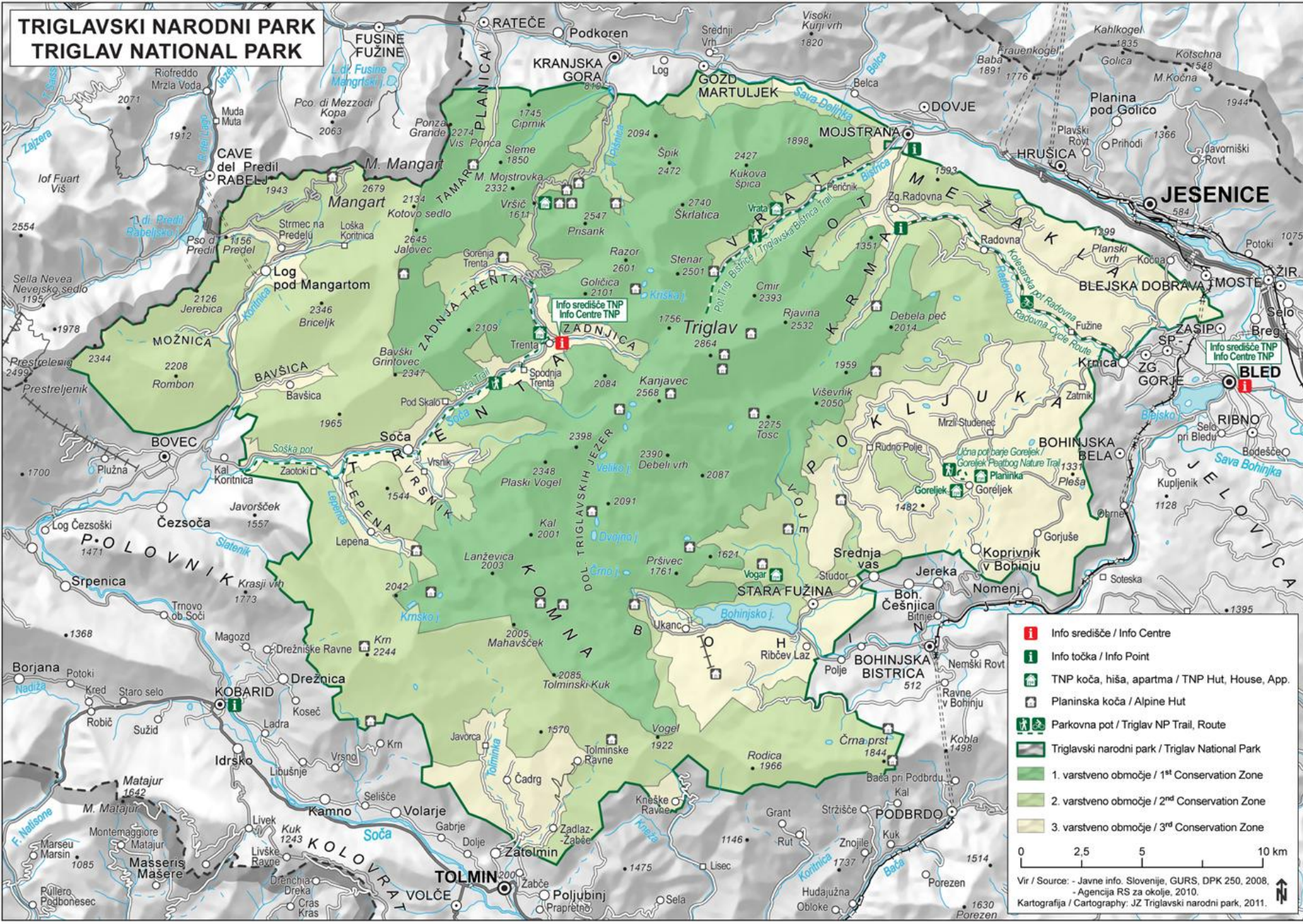


# AIMS OF NATIONAL PARK

- nature conservation
- preservation of cultural heritage
- sustainable development
- visitation



# TRIGLAVSKI NARODNI PARK TRIGLAV NATIONAL PARK



**i** Info središče / Info Centre  
**i** Info točka / Info Point  
 TNP koča, hiša, apartma / TNP Hut, House, App.  
 Planinska koča / Alpine Hut  
 Parkovna pot / Triglav NP Trail, Route  
 Triglavski narodni park / Triglav National Park  
 1. varstveno območje / 1<sup>st</sup> Conservation Zone  
 2. varstveno območje / 2<sup>nd</sup> Conservation Zone  
 3. varstveno območje / 3<sup>rd</sup> Conservation Zone

0 2.5 5 10 km

Vir / Source: - Javne info. Slovenije, GURS, DPK 250, 2008,  
 - Agencija RS za okolje, 2010.  
 Kartografija / Cartography, JZ Triglavski narodni park, 2011.

# Info centre Dom Trenta



# Center TNP Bohinj – Bohinjka



# Info centre Triglavska roža na Bledu





# Pocarjeva domačija v Zgornji Radovni





# Info točka v Slovenskem planinskem muzeju v Mojstrani

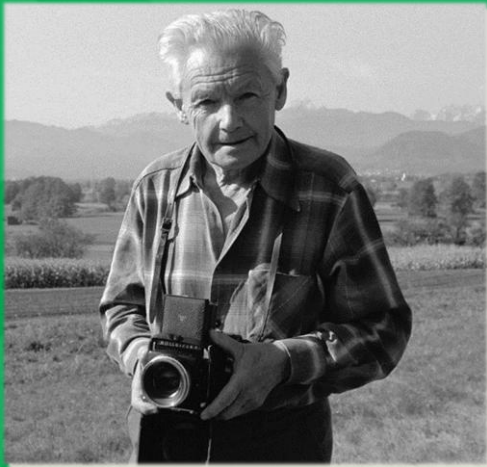


# Zelena hiša v Kobaridu



# SCHOOL PROGRAMME





# BELAR DAYS – Trenta Valley



Multiple choice  
stands along river  
Soča



# Different themes for different target groups



# Nature Education trail – guiding and workshops



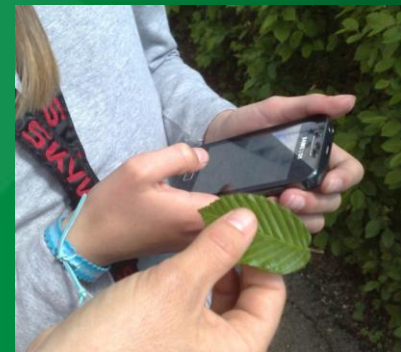


Forest Life

Animal Traces

Vegetation

Forest Management



# Water Life



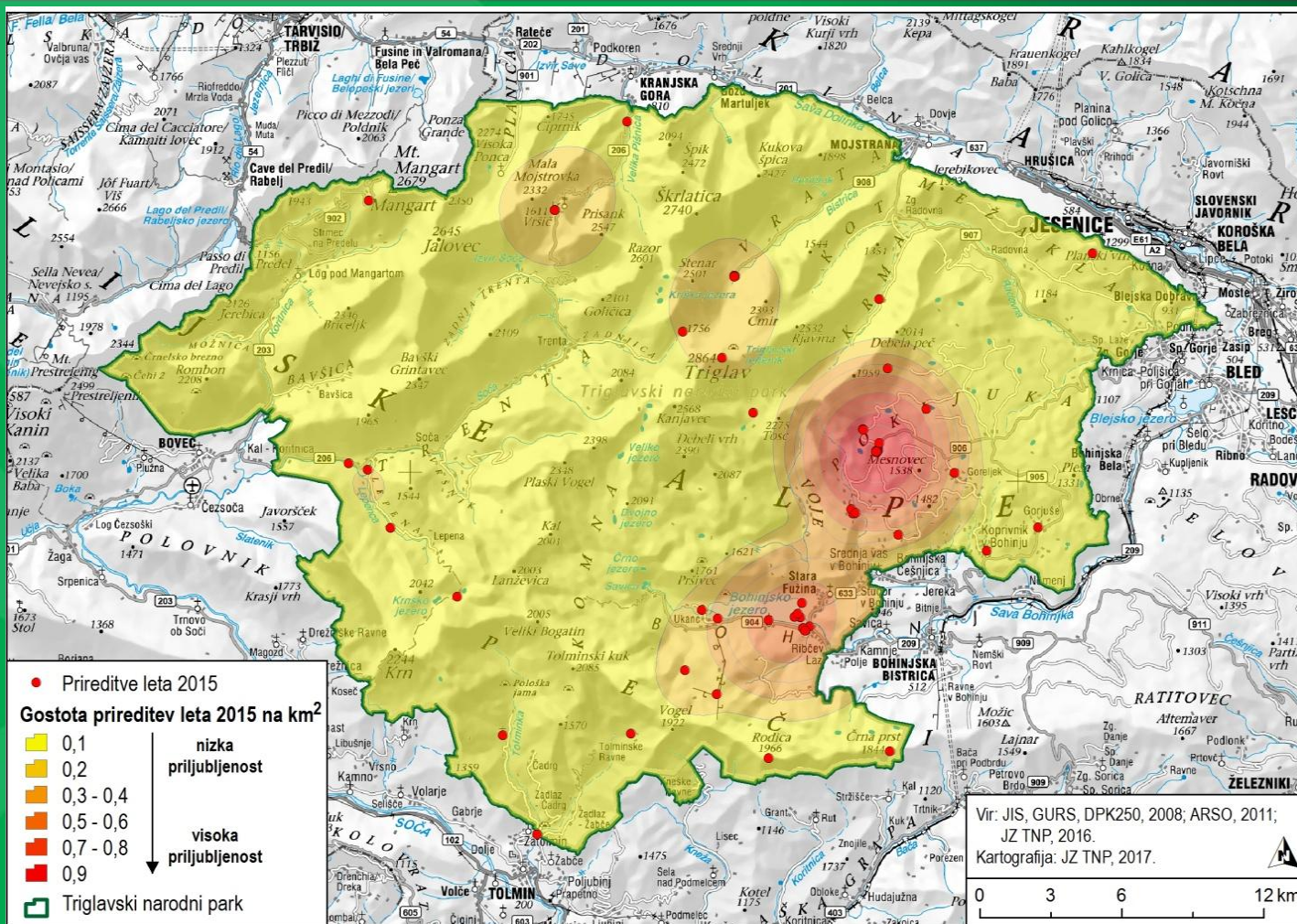
# Geomorphology



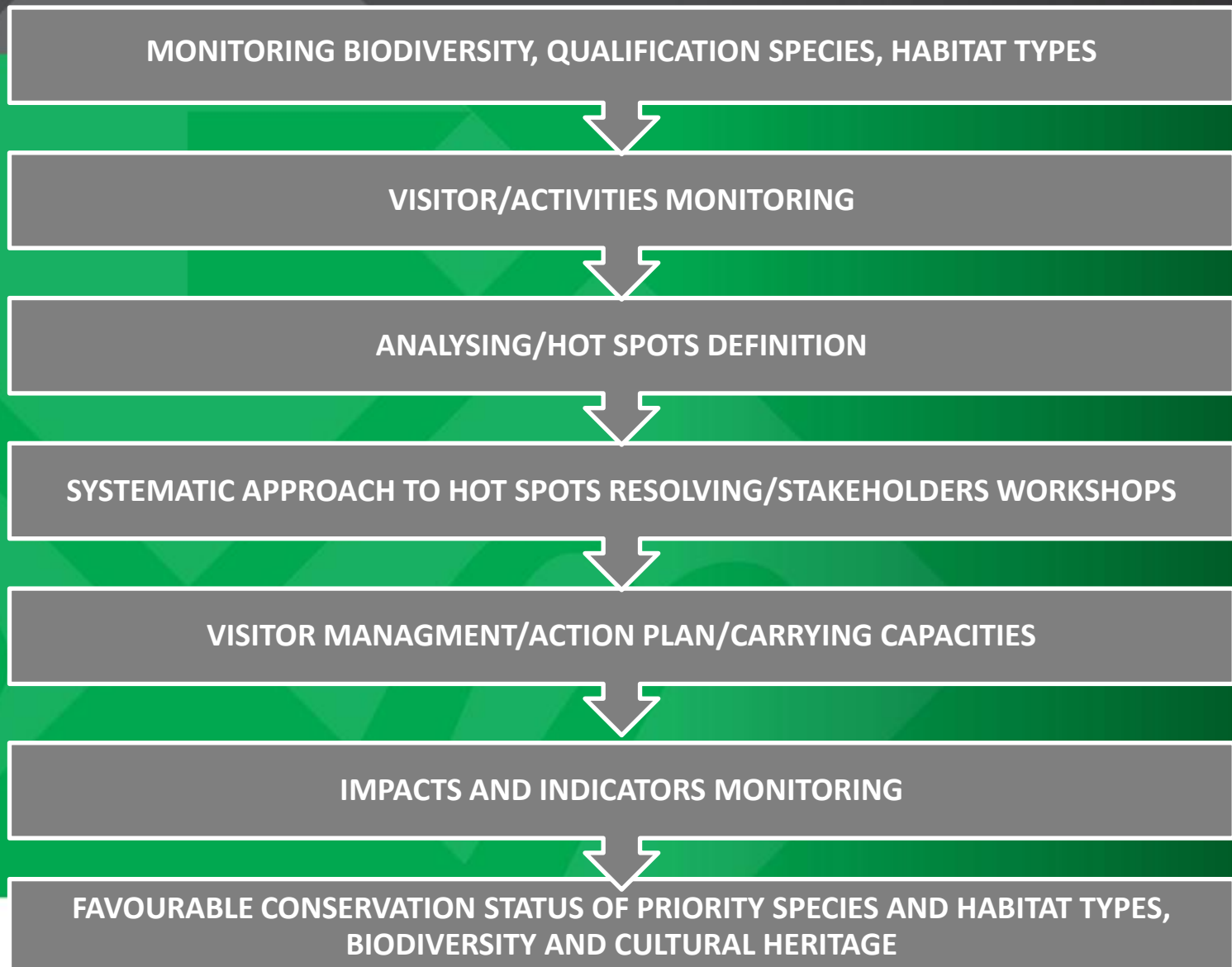
Social science based activities include workshops held at Farmhouse Pocar in Radovna valley, some other places in TNP and schools.



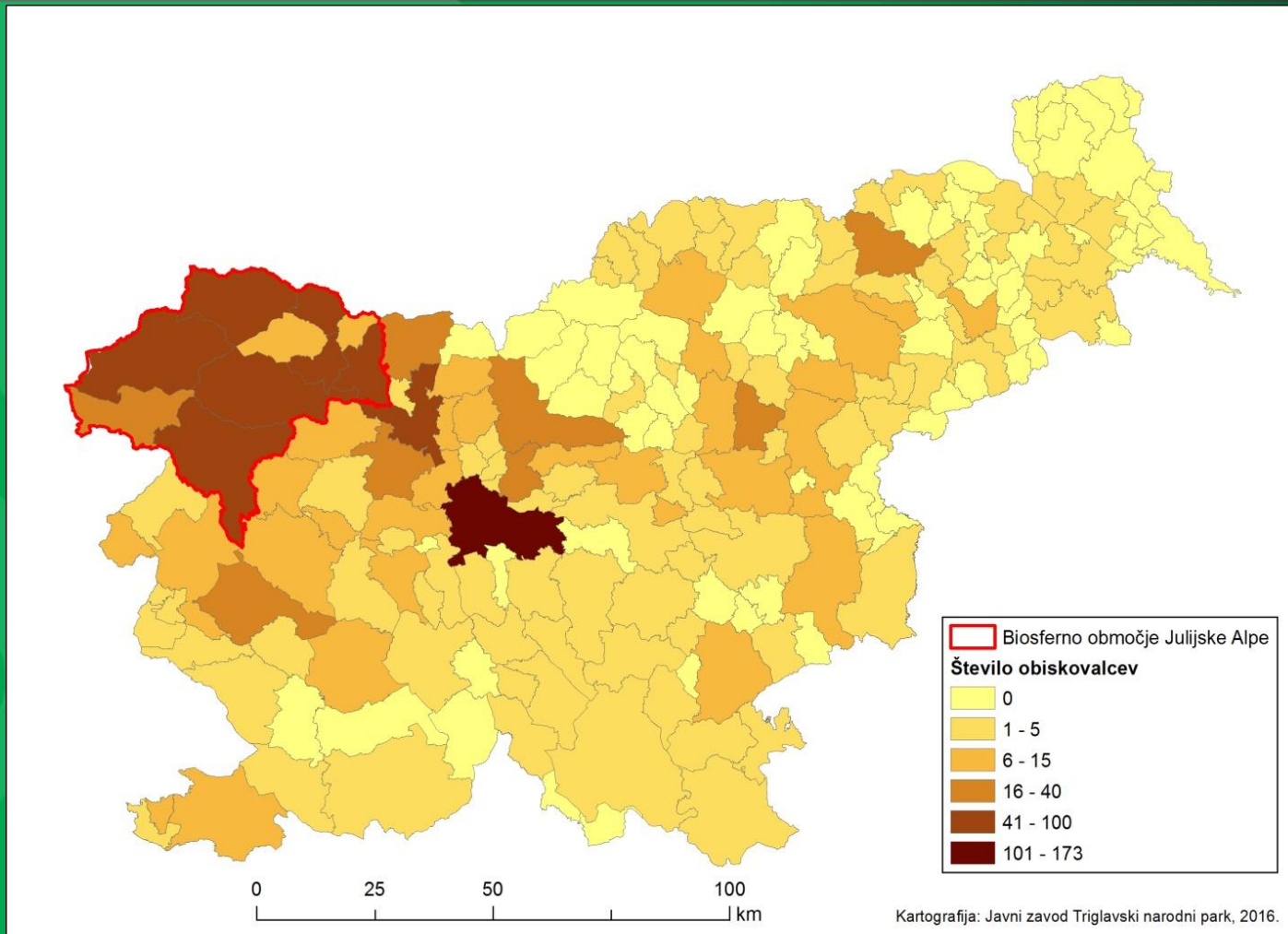
# Public Events in TNP 2015



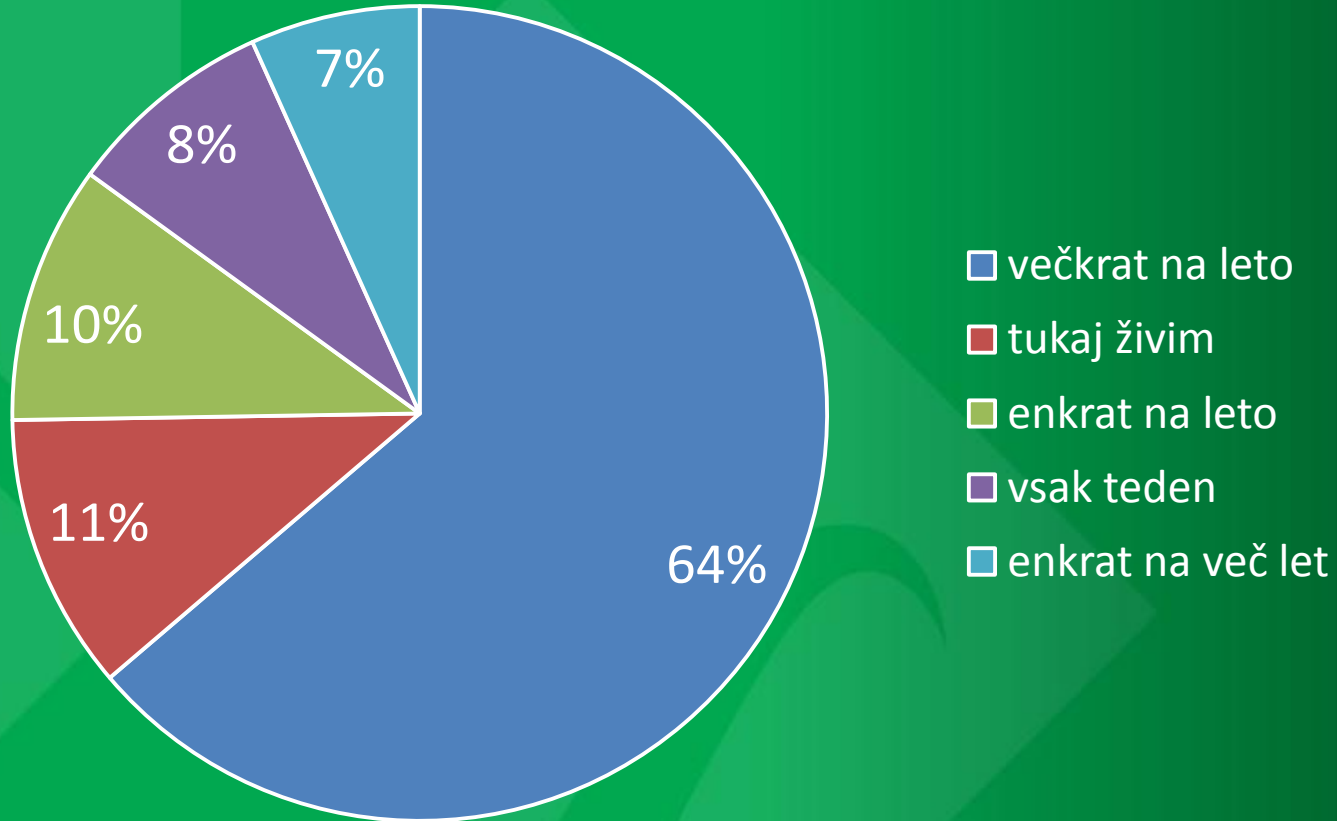
# Visitor Monitoring/Public Opinion



## DISTRIBUTION OF RESPONDENTS



# FREQUENCY OF VISITATION

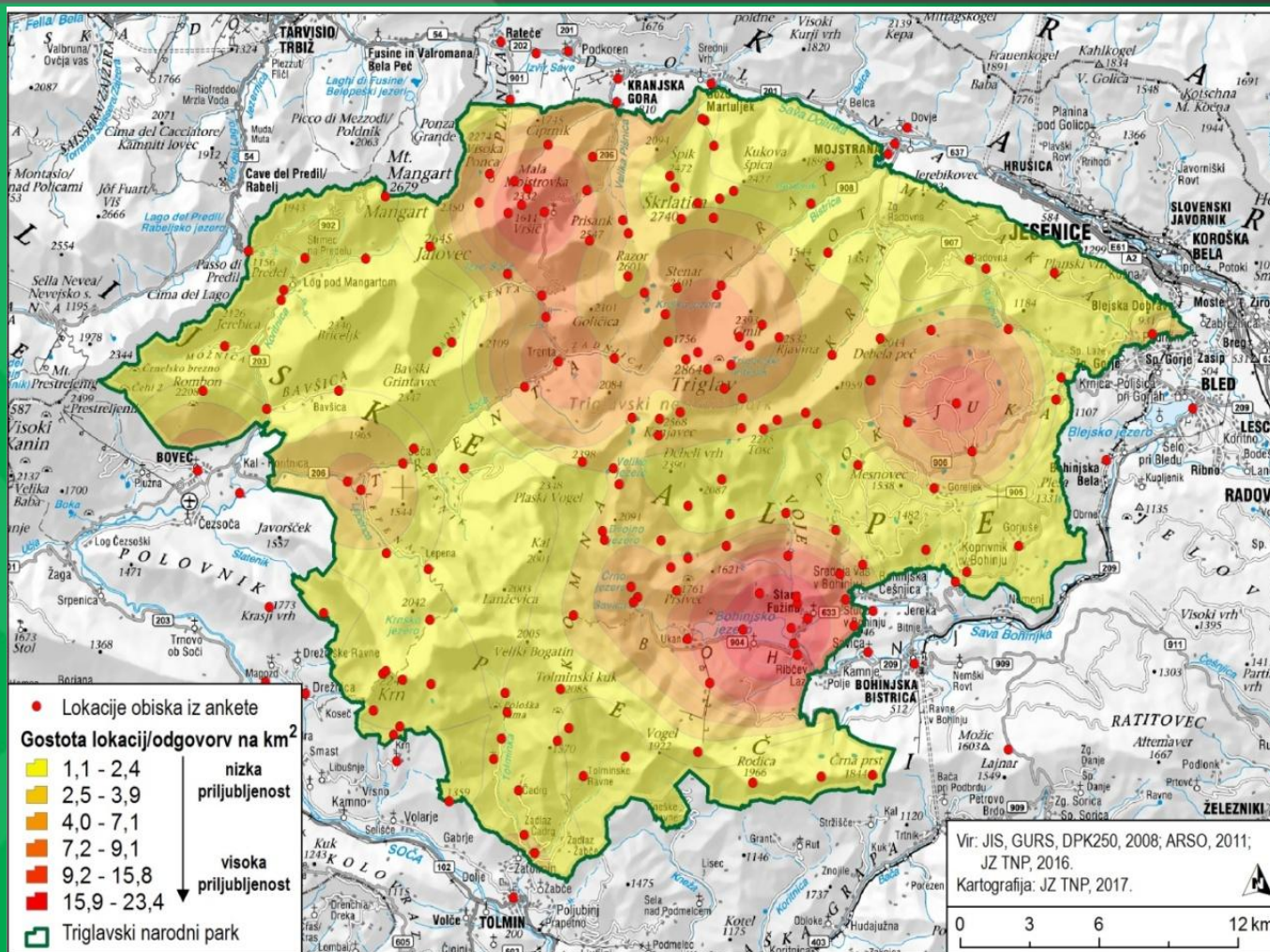




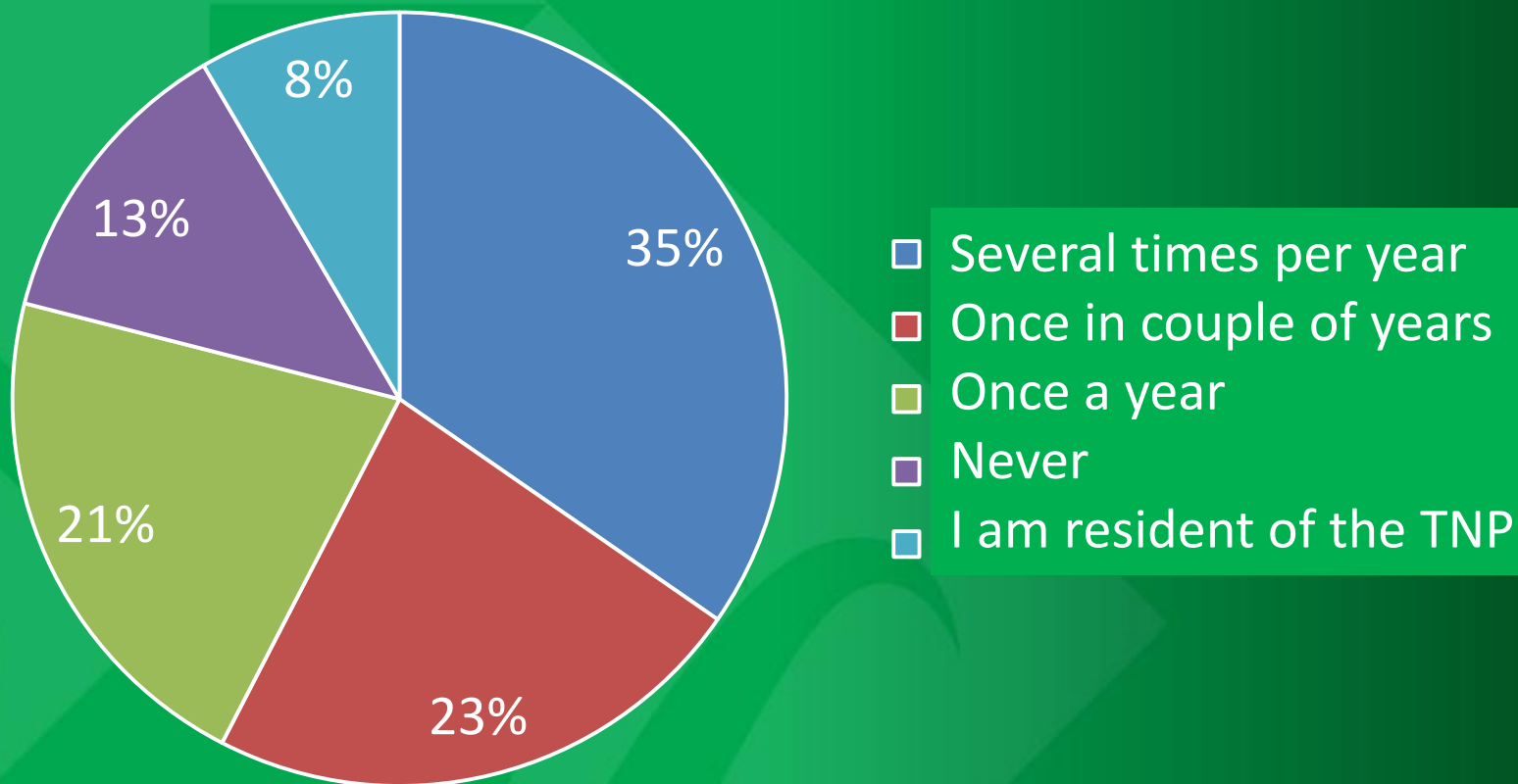
# MOST FAVOURABLE TIME OF YEAR FOR VISITATION



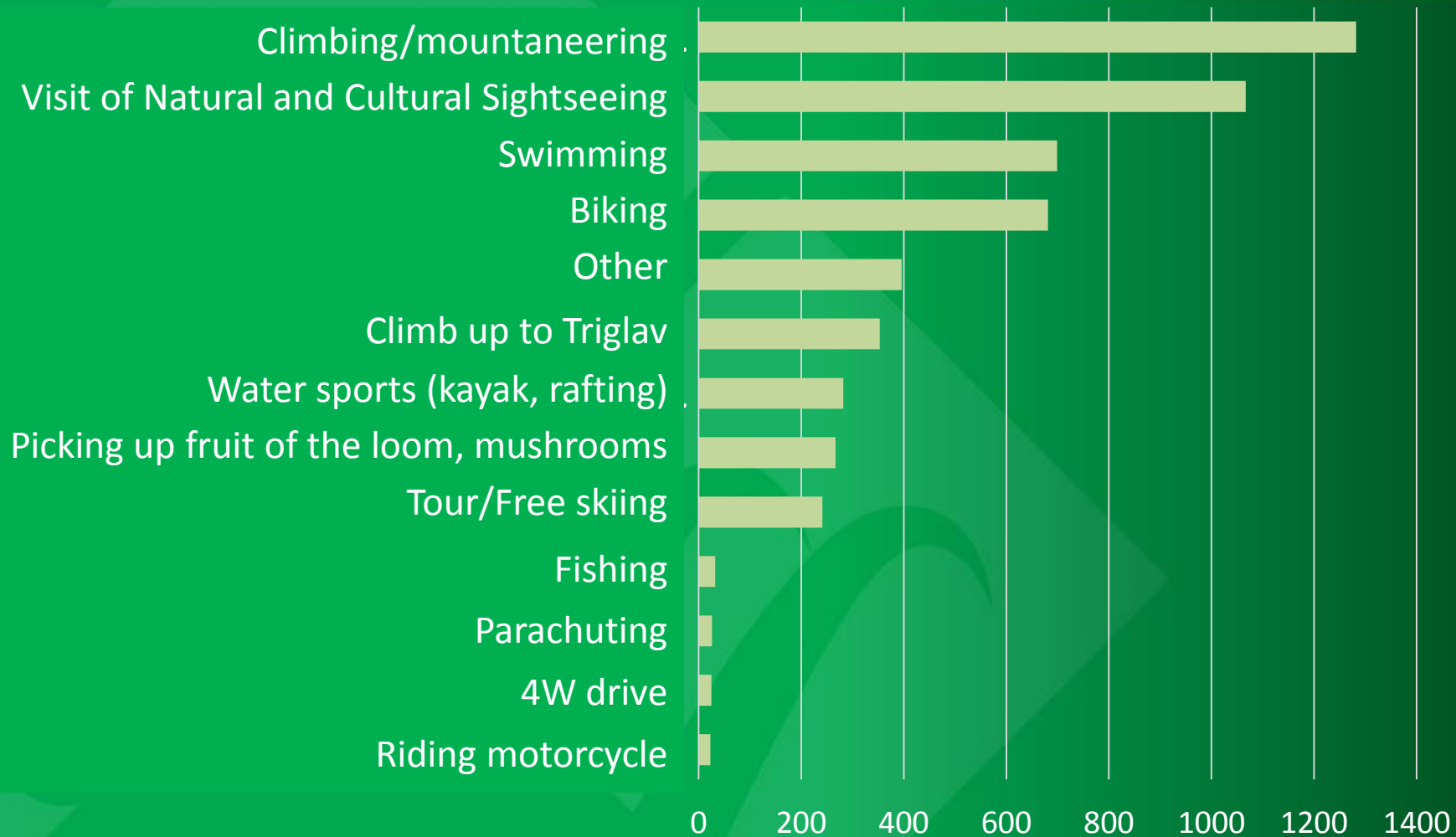
# MOST VISITED LOCATIONS



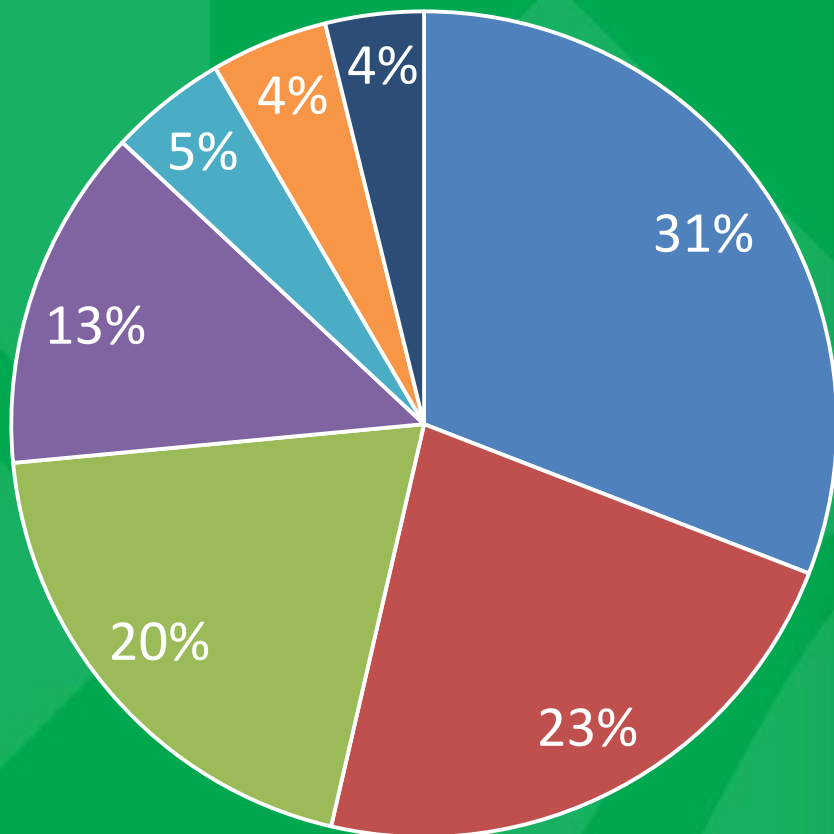
## OVERNIGHT STAYS IN THE TNP



# ACTIVITIES

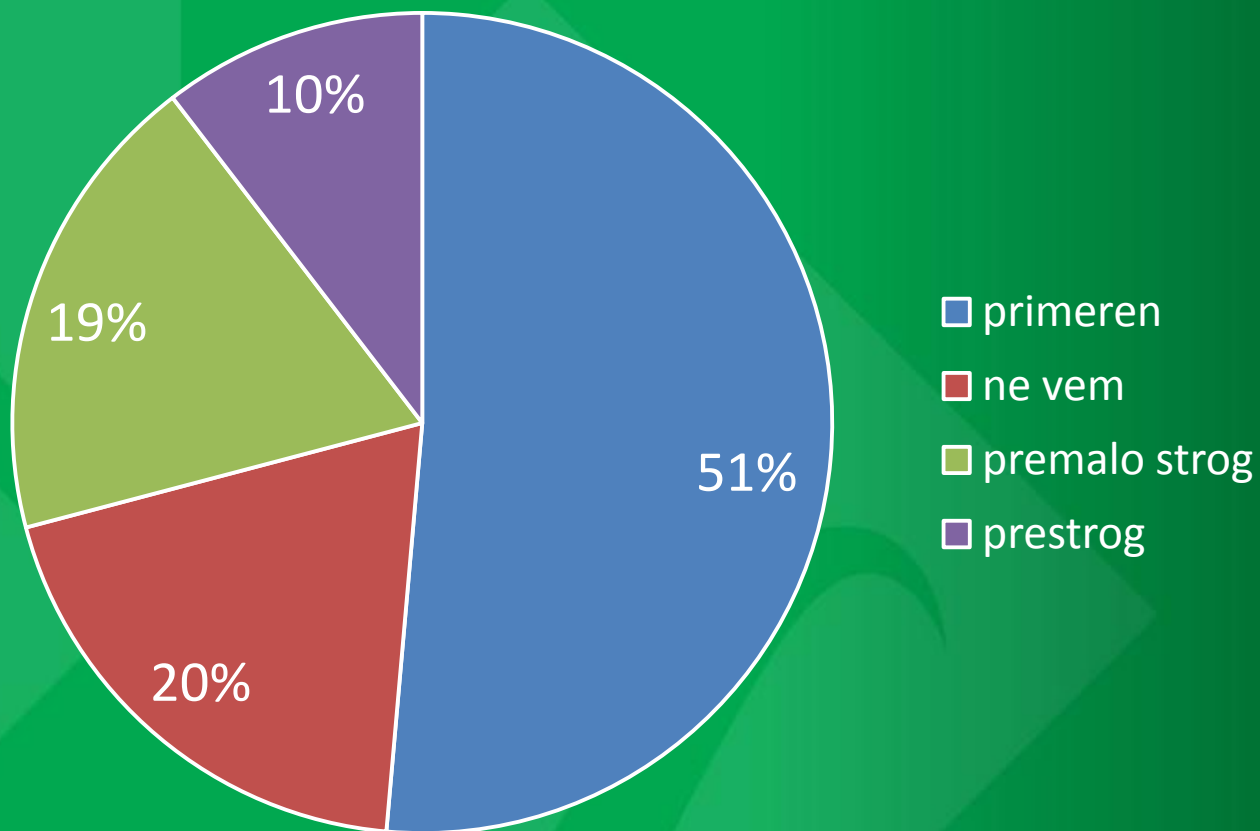


## VALUES/QUALITIES OF THE TNP

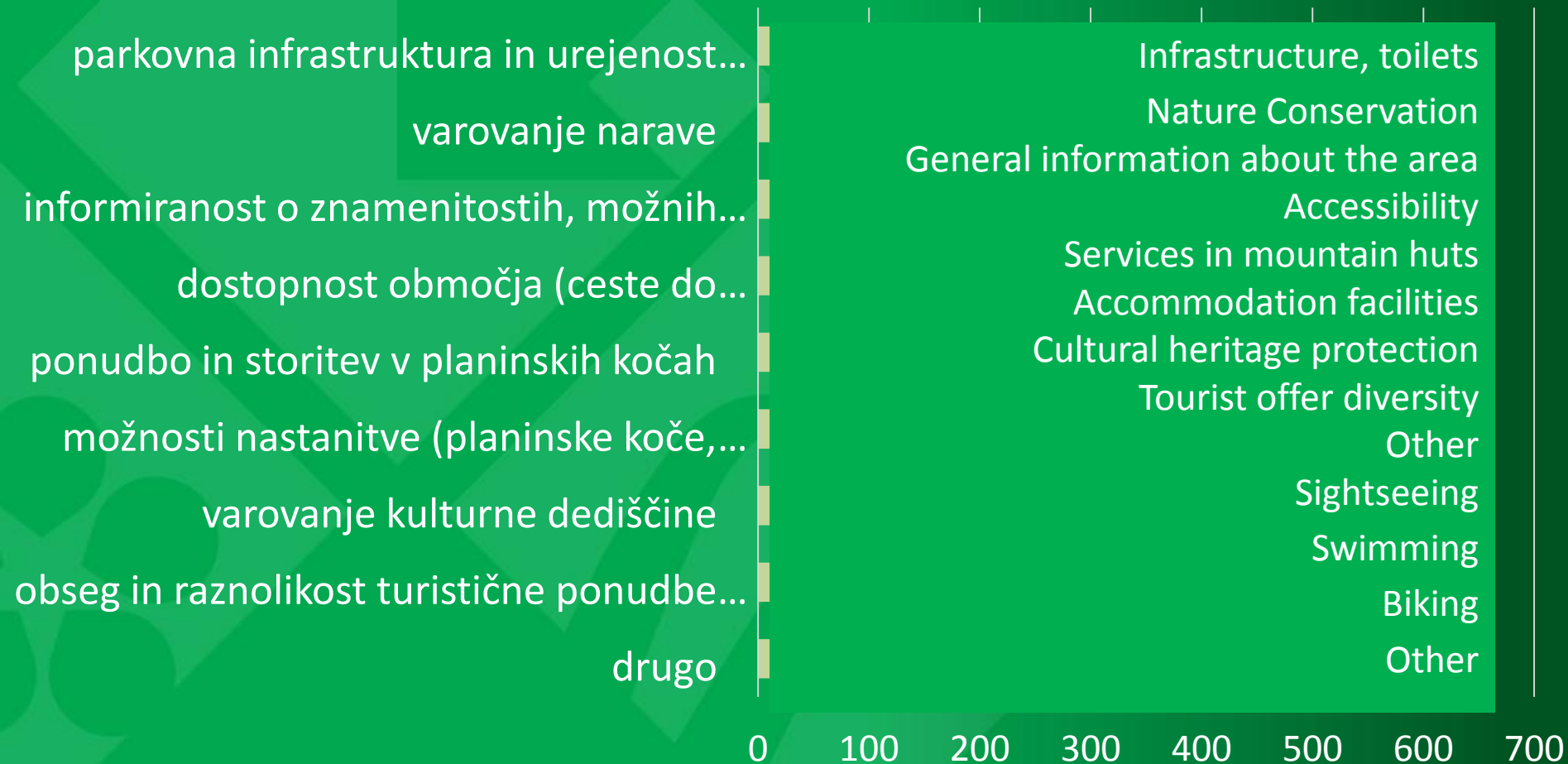


- lepa pokrajina
- mir in možnost uživanja v samoti
- spoznavanje gora
- bogastvo naravnih virov
- možnost različnih oblik rekreacije
- bogata kulturna dediščina
- drugo

# NATIONAL PARK RULES AND REGULATIONS

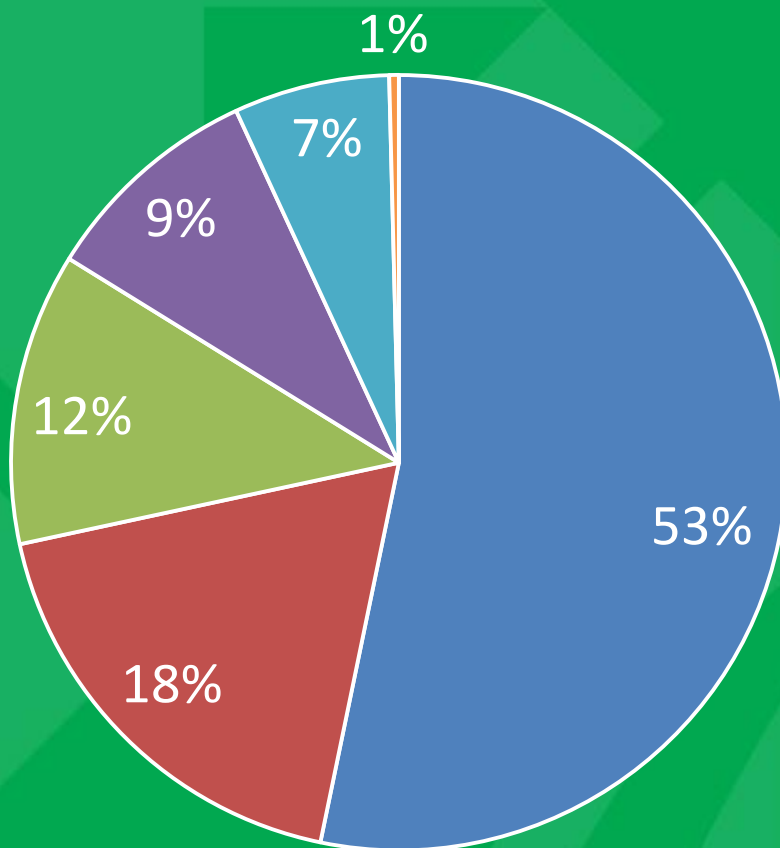


# IMPROVEMENT SUGGESTIONS IN THE TNP



število odgovorov

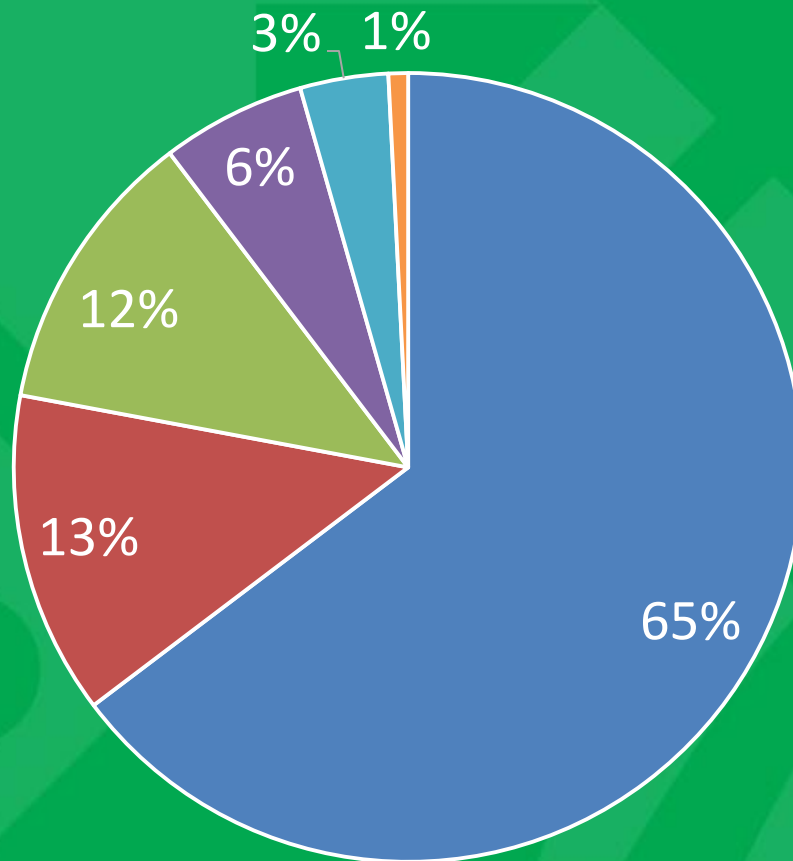
# BOHINJ LAKE ACCESSIBILITY



- Low cost public bus/van
- By bike
- By foot/hop on hop off bus
- By rental bike
- By private car despite high parking fee

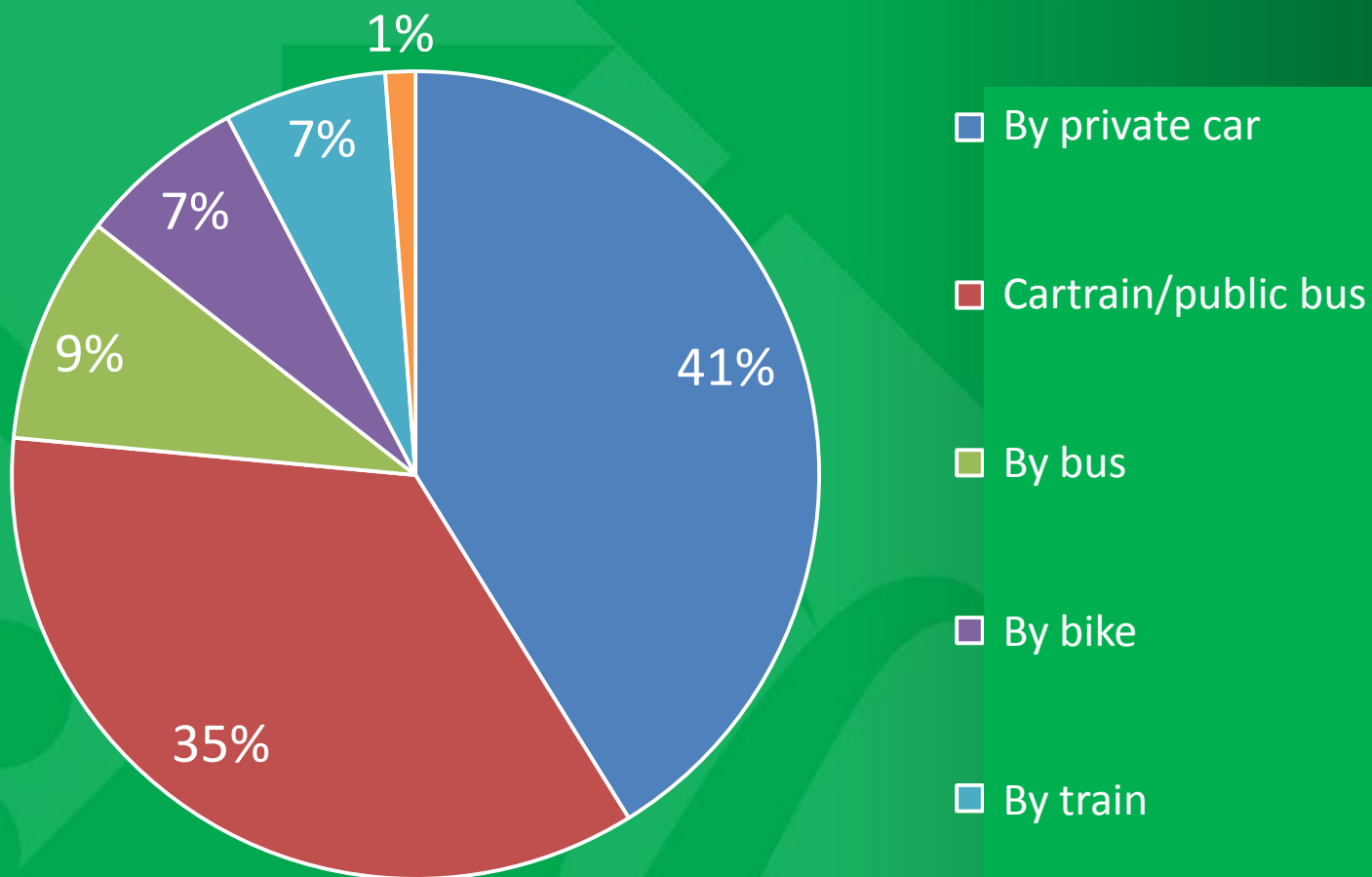


# VRATA VALLEY ACCESSIBILITY

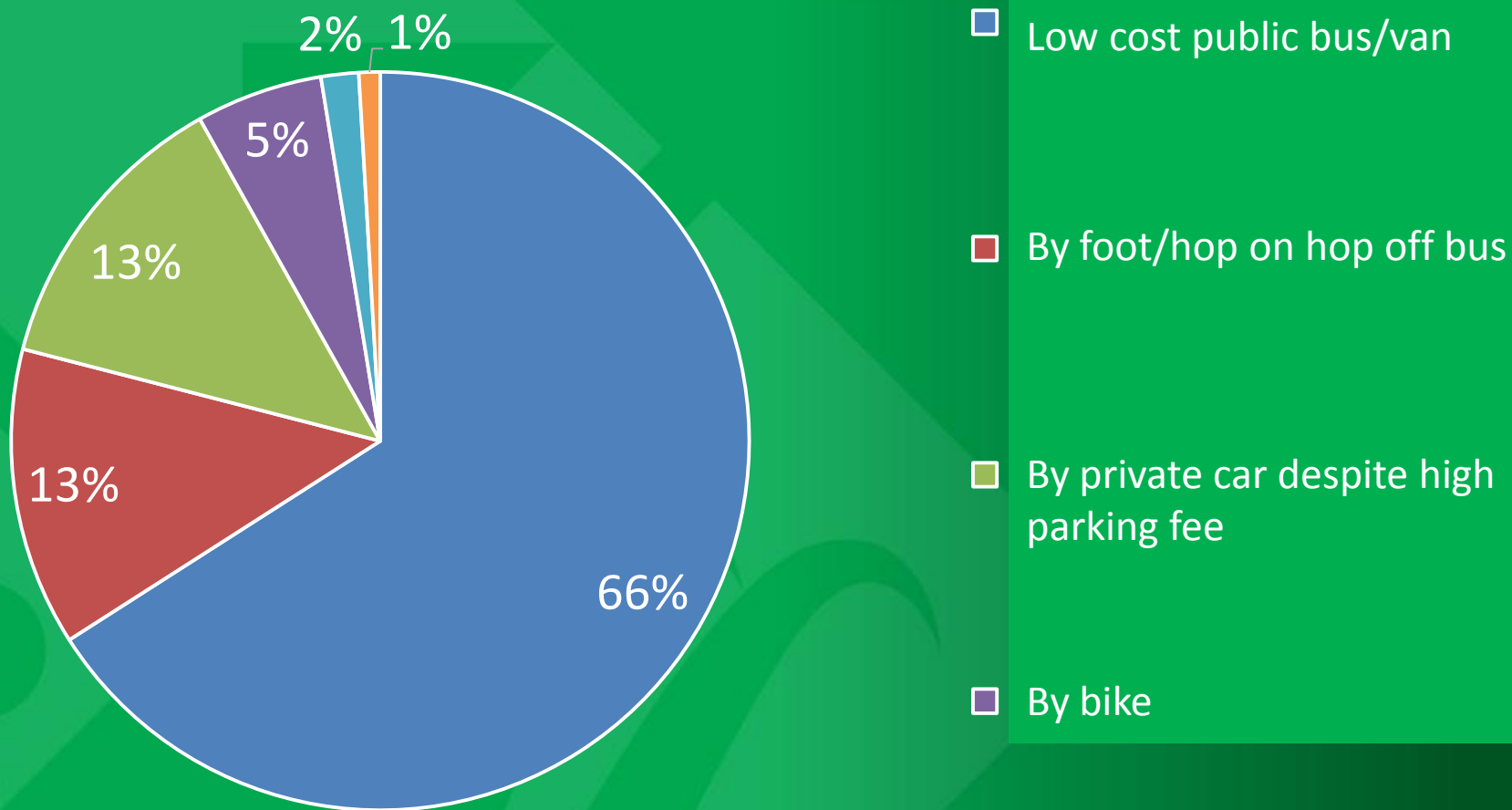


- Low cost public bus/van
- By private car despite high parking fee
- By foot/hop on hop off bus
- By bike
- By rental bike

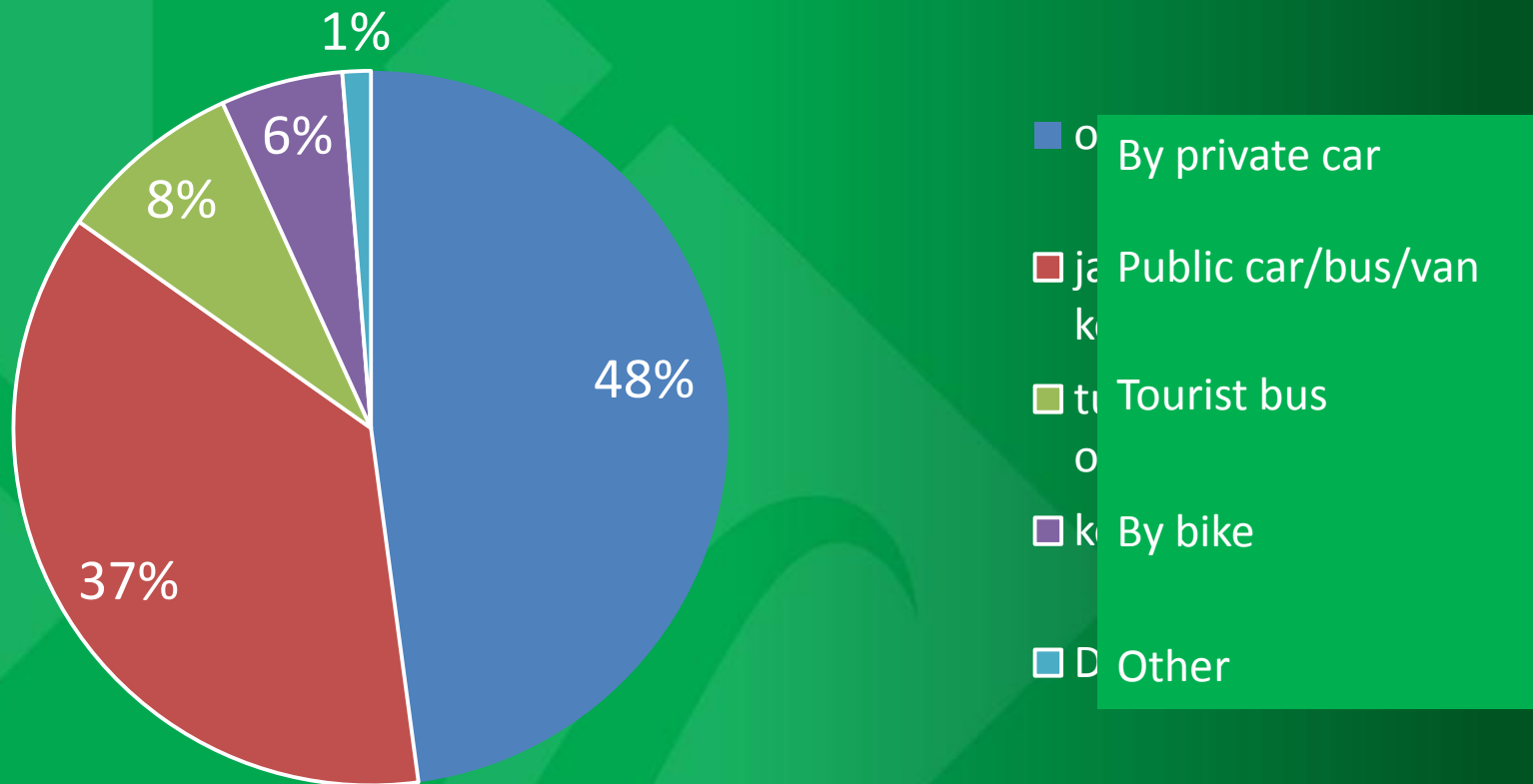
# SOČA VALLEY ACCESSIBILITY



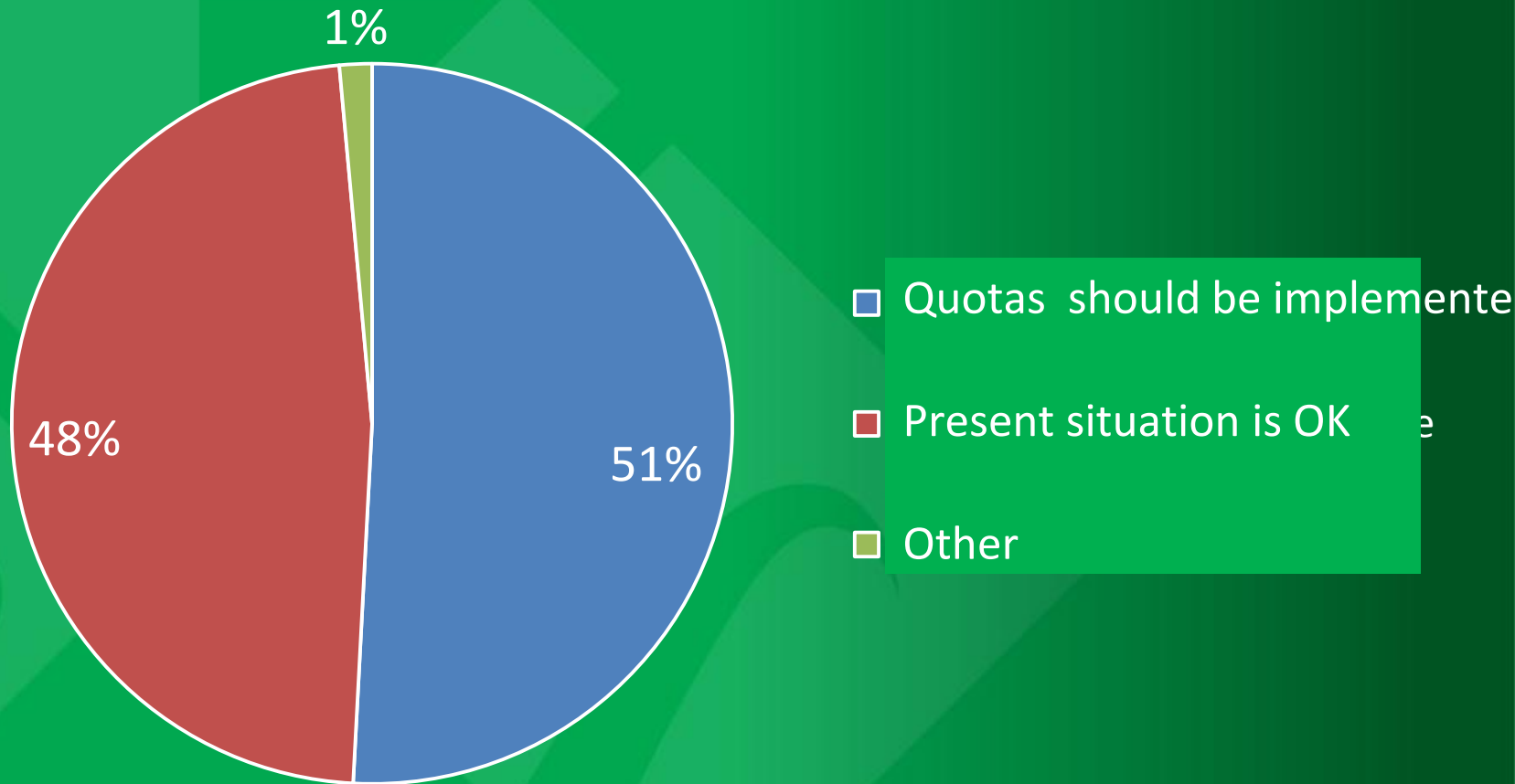
# POKLJUKA PLATEAU ACCESSIBILITY



# VRŠIČ PASS ACCESSIBILITY



# TRIGLAV SUMMIT QUOTAS/PUBLIC OPINION



# LONG-TERM PLAN/ACTION PLAN

- Action Plan for Visitor Management
- Includes different tools
- Carrying Capacity of the Environment
- Social Carrying Capacity
  
- **Sustainable Tourism**

Good environmental policy is good economic policy.

*Bernie Sanders*

Hvala